



**DNA Bridge**  
501(c)(3)  
EIN: 94-3291996

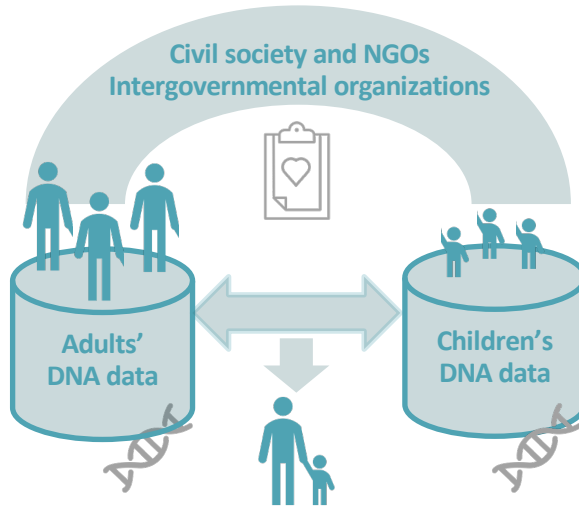
## DNA Bridge is working toward a global identification system to aid family reunification



[www.dnabridge.org](http://www.dnabridge.org)  
[info@dnabridge.org](mailto:info@dnabridge.org)

Forcible **family separations** can harm children and may cause lifelong effects on health and wellbeing

No child should ever remain separated from their family because they cannot be identified



- Globally we have protocols and processes for the **identification of human remains**
- There is **no global system** to aid the reunification of **living family members**
- **DNA markers** can be used securely with high accuracy to identify or verify relationships

DNA Bridge works with communities and organizations to use DNA technology with appropriate safeguards as a catalyst for healing

Not using DNA technology can unnecessarily prolong separations

### Contexts for which DNA was or could have been useful for family reunifications

*subjective*  
not easy to obtain during an emergency  
may become outdated or be lost  
questionable validity

TRADITIONAL IDENTITY DOCUMENTS



BIOMETRIC IDENTITY METRICS

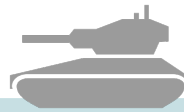


*objective*  
accurate for identity/kinship  
kinship does not convey all family structures  
remains accurate over time  
data protections needed



#### DISASTER

Manmade disaster renders separation  
**9/11 attacks 2001**  
  
Natural disaster renders separation  
**SE Asia tsunami 2004**  
**Hurricane Katrina 2005**  
**Turkey earthquake 2023**



#### ARMED CONFLICT

Children kidnapped during war  
**Argentina 1976-1982**  
**El Salvador 1980-1992**  
  
Battle/attack renders separation  
Parents relinquish children for safety during war  
**Ukraine 2022-current**



#### MIGRATION

Child suspected to be trafficking victim  
**Europe-arriving Syrian refugees 2015-current**  
  
Family separated by government for migration deterrence  
**US-arriving Central American families 2017-2021**  
**Bangladesh-arriving Rohingya refugees 2017-current**